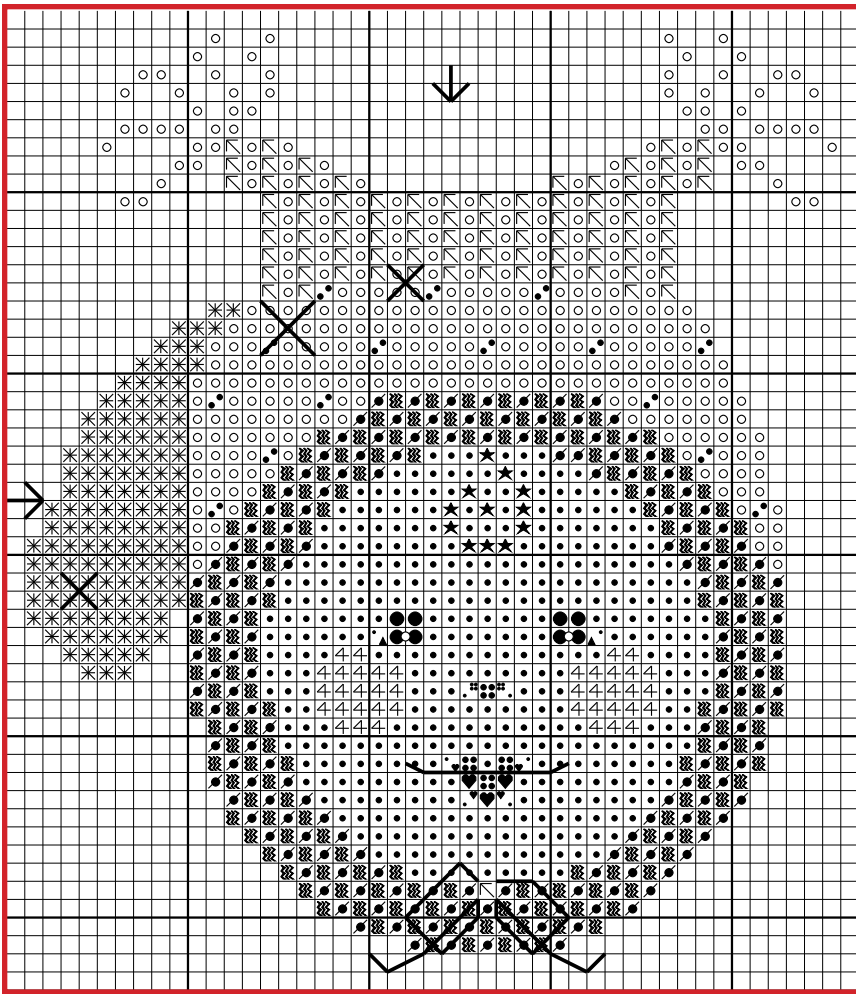


# Sophia's 1st Annual Christmas Mitten



**DESIGN AREA** 45W X 52H  
 10 count.....4.5 X 5.2  
 14 count (28 linen).....3.2 X 3.7  
 15 count (30 linen).....3 X 3.5  
 16 count (32 linen).....2.8 X 3.3  
 Linen worked over two threads.

<u>COLOR CODE</u>	<u>DMC</u>	<u>ANCHOR</u>
♥ Geranium	335	40
⌘ Light Spruce	503	876
• Pale Fern	524	858
•• Rosey Nose	776	24
• Babyface	819	271
⊕ Rosey Cheek	3713	1020
● Ocean	3810	1066
▲ Tidepool	3811	1060
● Pale Spruce	3813	875
★ Goldilocks	3822	295
* Cocoa	3860	379
⌘ Cocoa & Cream	3861	378
○ Winter White	3865	2

3/4 STITCHES

Eyes..... 3/4 in 3811, 1/4 in 819  
 Nose ..... 3/4 in 776, 1/4 in 819  
 Mouth..... 3/4 in 335, 1/4 in 819

FRENCH KNOT

Eyes..... Single Ply  
 3865/2

BACKSTITCH

Mouth..... Single Ply  
 3350/77  
 Bow ..... 3861/378

NOTE The X's indicate the placement of buttons if so desired. We recommend creamy matte-finished buttons sized for the gauge of your chosen fabric.

SUGGESTIONS

Sophia's First Annual Christmas Mitten looks best on softly colored fabrics. We recommend R&R Reproduction 30 count "Morning Fog" or Wichelt Imports "Star Sapphire" in 28 count. When stitching on the recommended linen work two ply thread over two threads of linen. Please be encouraged to choose a fabric and color that appeals to you and allows all stitches to be visible. Check color compatibility by gathering your thread choices and laying them across the linen. Try different threads or change the fabric color until you are pleased.

**ENJOY!**



Compliments of  
**THE CRICKET COLLECTION**

Thank you for visiting! Come again.