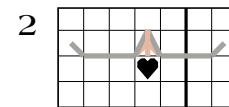
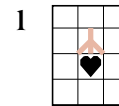


DESIGN AREA 42W X 44H
 10 count.....4.2 X 4.4
 14 count (28 linen).....3 X 3.1
 15 count (30 linen).....2.8 X 2.9
 16 count (32 linen).....2.6 X 2.8
 Linen worked over two threads.

BACKSTITCH Single Ply
 Snowflake Blanc/1
 Kitten's Face & Paws 647/1040
 Kitten's Tongue* 224/893
 Line between Scarf Tails 310/403
 Clarifying stitches around edge of
 Kitten's Paws..... 597/1064

Scarf Fringe matches the color of the stitches immediately above it: 3802/1019 on the left "tail" and 3350/77 for the right.

*See diagram below for clarification of the backstitching for the kitten's tongue. Stitch (1) first, followed by (2).



©Vicki Hastings 2016

Sophia & Addie's Snowflake Kitten Mitten

SUGGESTIONS Snowflake Kitten Mitten looks best on softly colored fabrics, especially white and off-white. When stitching on the 28 or 30 count linen, work two ply floss over two threads of linen. Please be encouraged to choose a fabric and color that appeals to you and allows all stitches to be visible. Check color compatibility by gathering your thread choices and laying them across the linen. Try different threads or change the fabric color until you are pleased.

ENJOY!

COLOR CODE	DMC	ANCHOR
✱	Snow White	Blanc 1
▼	Nose Pink	223 895
♥	Tongue Pin	224 893
△	Shell Pink	225 1026
●	Dark Pine	469 267
◁	Pine	471 265
⦿	Aqua	597 1064
●	Lake Blue	807 168
#	Pale Pink	818 23
4	Pink	962 75
♣	Rose	3350 77
⊞	Wine	3802 1019
	Deep Ocean	3809 1066
○	Seafoam	3811 1060
•	Winter White	3865 2

Compliments of
THE CRICKET COLLECTION

Thank you for visiting! Come again.